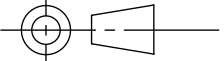
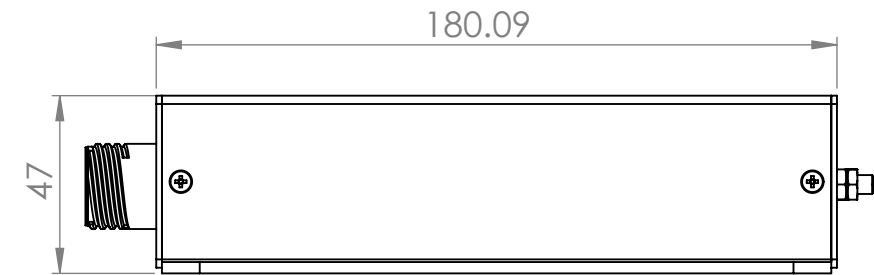
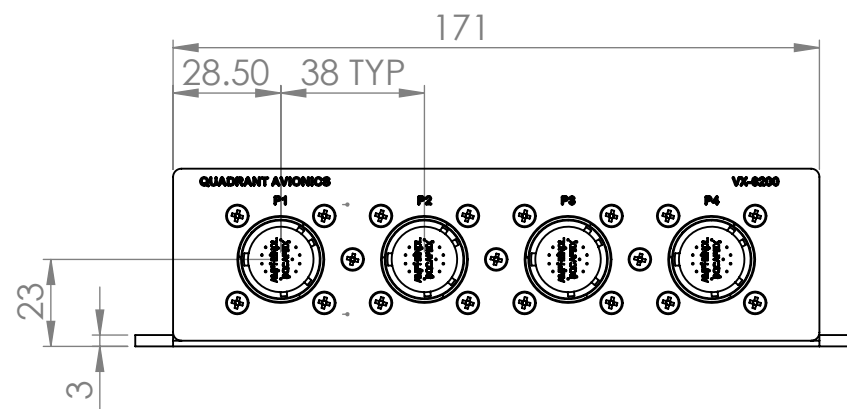
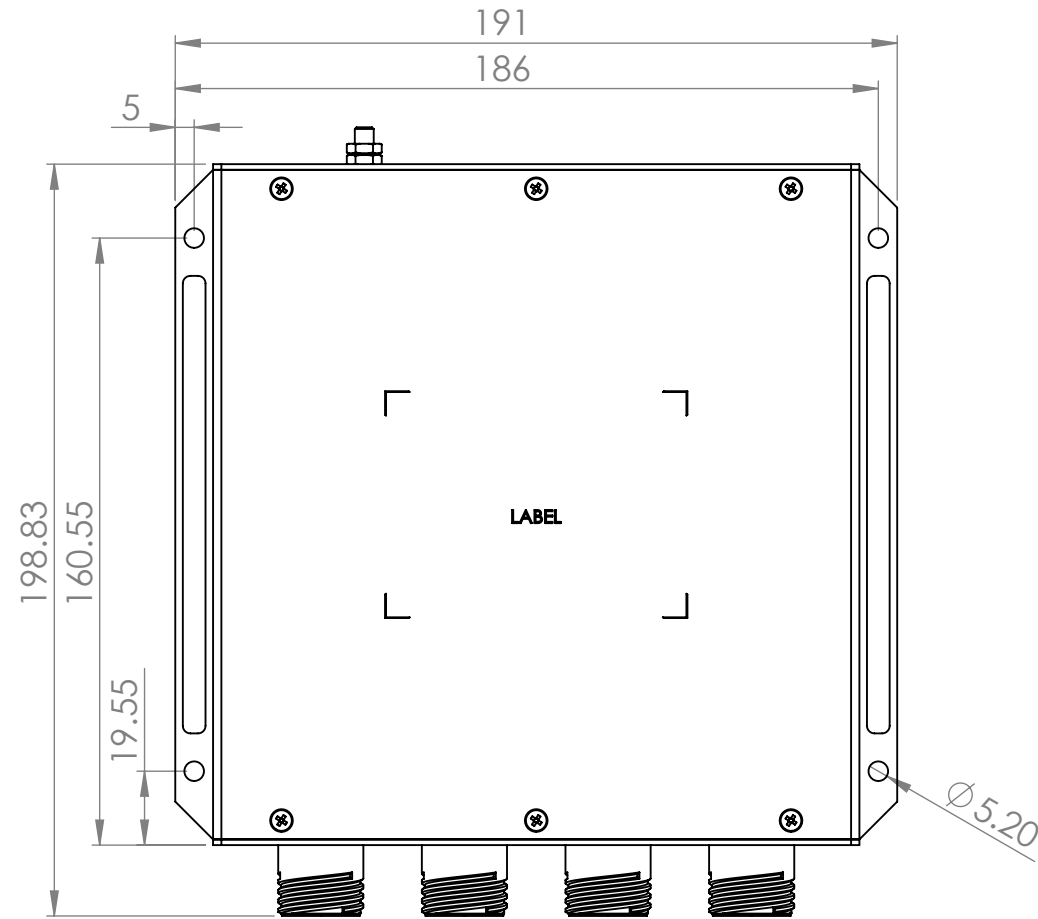
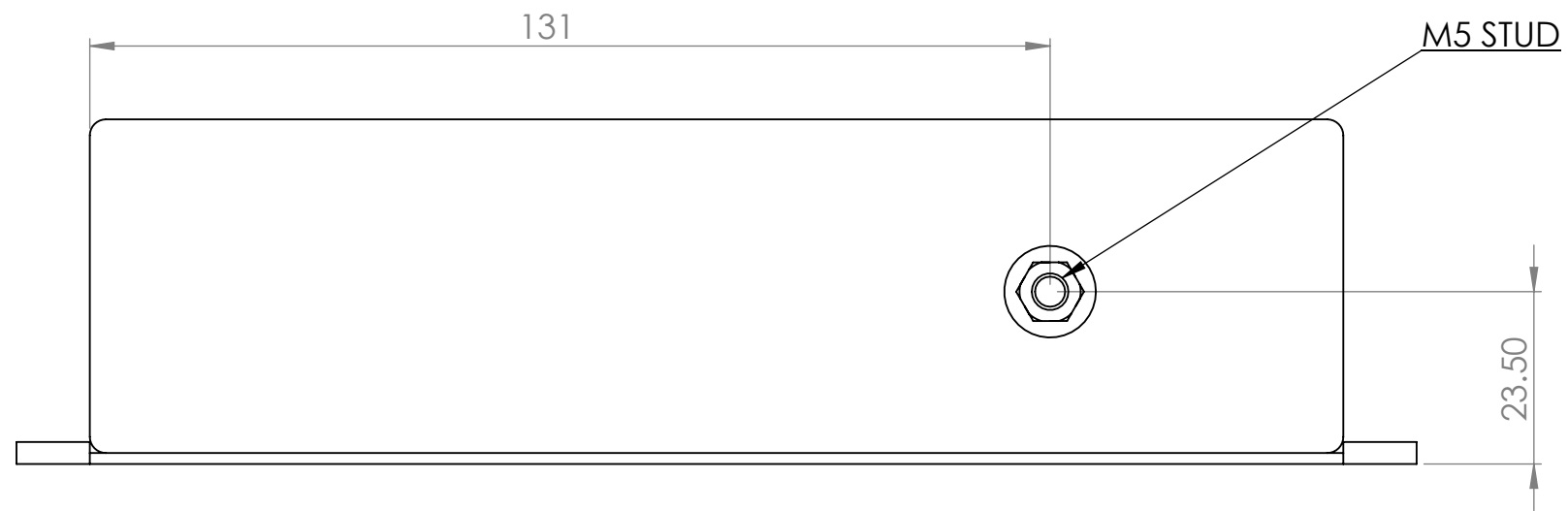

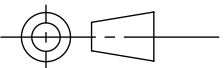
 Excellence in Aerospace Electronics	Quadrant Avionics limited			THIRD ANGLE 
	DRAWN	S.Digby-Baker	01/08/2014	
This drawing is derived from CAD data and should not be manually modified. All changes should be made via the original author. This drawing and its contents are copyright Quadrant Avionics Ltd. and may not be reproduced by any means without permission and should be considered confidential.	CHECKED			
	QUALITY			
Unless otherwise specified, all dimensions are in millimetres and tolerances are $\pm 0.1\text{mm}$	APPROVED	J.Sullivan	01/08/2014	
IF IN DOUBT ASK: Quadrant (01227) 811959	DWG NO:	32-10037-4	Revision	4
Integra VX-6200 8 port Gigabit Switch - General Assembly				SHEET 1 OF 3



<p><b>QUADRANT AVIONICS</b> Excellence in Aerospace Electronics</p>	Quadrant Avionics limited			THIRD ANGLE 
	DRAWN	S.Digby-Baker	01/08/2014	
This drawing is derived from CAD data and should not be manually modified. All changes should be made via the original author. This drawing and its contents are copyright Quadrant Avionics Ltd. and may not be reproduced by any means without permission and should be considered confidential.	CHECKED			
	QUALITY			
Unless otherwise specified, all dimensions are in millimetres and tolerances are ±0.1mm	APPROVED	J.Sullivan	01/08/2014	
IF IN DOUBT ASK: Quadrant (01227) 811959	DWG NO:	32-10037-4	Revision	4
Integra VX-6200 8 port Gigabit Switch - General Assembly				SHEET 2 OF 3



 Excellence in Aerospace Electronics	Quadrant Avionics limited			THIRD ANGLE 
	DRAWN	S.Digby-Baker	01/08/2014	
This drawing is derived from CAD data and should not be manually modified. All changes should be made via the original author. This drawing and its contents are copyright Quadrant Avionics Ltd. and may not be reproduced by any means without permission and should be considered confidential.	CHECKED			
	QUALITY			
Unless otherwise specified, all dimensions are in millimetres and tolerances are $\pm 0.1\text{mm}$	APPROVED	J.Sullivan	01/08/2014	
IF IN DOUBT ASK: Quadrant (01227) 811959	DWG NO:	32-10037-4	Revision	4
Integra VX-6200 8 port Gigabit Switch - General Assembly				SHEET 3 OF 3